



**Nottinghamshire
County Council**

Your Nottinghamshire Your Future **Your Say**

Complete the residents' survey

19 October to 24 November 2017

Have your say

on Nottinghamshire
County Council services.

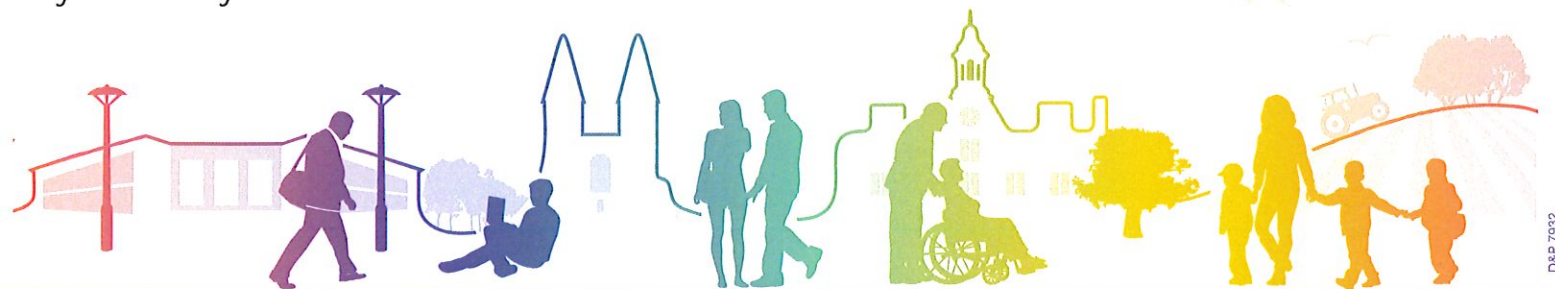
Like all councils across the country we're under financial pressure and need to make the right choices. So tell us how we're doing and about the priorities for you and your family.

The online survey takes just minutes to complete. **Have your say today** – visit:
nottinghamshire.gov.uk/residentssurvey


Alternatively complete a printed copy at your local library or give us a call on:

0300 500 80 80

Open to all Nottinghamshire County residents aged 18 and above.



nottinghamshire.gov.uk/residentssurvey

Find out first... **emailme** 

 facebook.com/nottinghamshire

 [@NottsCC](https://twitter.com/NottsCC)