

**Radcliffe on Trent
Parish Council
NEWSLETTER
Winter 2015**



**www.rotpc.com
www.radcliffe-grangehall.co.uk
Twitter - @ROTPC
Facebook - Grange Hall & The Grange**

THE COFFEE HOUSE @ THE CHOCOLATE BOX

1 WALKERS YARD • RADCLIFFE-ON-TRENT • NG12 2FF • 0115 933 4888



HOMEMADE CAKES

OUR SECRET RECIPE SCONES

FRESH SANDWICHES

200^o COFFEE

REAL BELGIAN HOT CHOCOLATE

TEAS | MILKSHAKES | COLD DRINKS

HOT FOOD COMING THIS WINTER

WE DO TAKE AWAY TOO!

£1 OFF OUR INCREDIBLE HOT CHOCOLATE!

OR ANY OTHER HOT DRINK (EXCLUDING HOUSE SPECIAL) WITH THIS VOUCHER • OFFER VALID UNTIL 15TH NOVEMBER 2015

Members of the Parish Council Committees

GEORGIA MOORE—Chairman of the Parish Council

9 Pimlico Close, Tel: 9335141, Email: georgia_moore@hotmail.co.uk

DAVID BARTON—Vice Chairman of the Parish Council

5 Rockley Avenue, Tel: 9332633, Email: davidhbarton@btopenworld.com

MARTIN CULSHAW - Chairman of the Planning & Environment Committee

49 Shelford Road, Tel: 9119137, Email: mgculshaw27@virginmedia.com

JOSEPHINE SPENCER - Chairman of Finance & General Purpose Committee

21 Grandfield Avenue, Tel: 9332401, Email: Josephinemabels@btinternet.com

SUE CLEGG - Chairman of the Grange & Grange Hall Management Committee

86 Whitworth Drive, Tel: 9118779, Email: sue.clegg3@ntlworld.com

JOHN THORN - Chairman of the Amenities Committee

22 Lorne Grove, Tel: 9118228, Email: john.thorn51@icloud.com

Radcliffe on Trent Parish Council

The Grange & Grange Hall

Vicarage Lane

Radcliffe on Trent

Nottingham

NG12 2FB

Tel:0115 9335808

clerk@rotpc.com

www.rotpc.com

Staff

Parish Clerk.....Jacki Grice 0115 9335808 Ex2

The Grange & Grange Hall Manager.....Lisa Simpson 0115 9335808Ex1

Councillors

Trent Ward

David Astil.....0115 9332557

David Barton0115 9332633

Graham Budworth0115 9333579

Martin Culshaw0115 9119137

Graham Leigh-Brown.....0115 9332349

Josephine Spencer.....0115 9332401

Pam Thompson.....0115 9335382

John Thorn.....0115 9118228

Alice Tomlinson.....07947 740154

Manvers Ward

Keith Agar0115 9333381

Penny Astil.....0115 9332557

Rod Brears0115 9332065

Joe Bailey.....0115 8451071

Bill Banner.....0115 9335921

Sue Clegg.....0115 9118779

Gillian Dunn.....0115 9118595

Georgia Moore.....0115 9335141

Jean Robinson0115 933 2573

KEYWORTH DRAMATIC SOCIETY
AUTUMN PRODUCTION – 25th- 28th NOVEMBER 2015

GRANGE HALL, RADCLIFFE ON TRENT

UP POMPEII
By Miles Tredinnick

This is our upcoming stage version of Frankie Howard's classic comedy series. Full of 'Carry On' sauciness, unforgettable dialogue and old fashioned British seaside humour. Up Pompeii is sure to put smiles on faces this Autumn!

Do come and join us for a highly entertaining and fun evening!

The productions are on Wednesday, 25th, Thursday 26th, Friday 27th November at 7.30pm in Grange Hall with a matinee as well on Saturday 28th November at 2.30pm.

Tickets priced £8, incl free refreshments (no concessions) are on sale from Storeys and the Library in Keyworth, and from Pen2Paper and in Grange Hall in Radcliffe on Trent and also from the BOX OFFICE on 0115 9146865 and 0115 9143450

There will be a bus on the THURSDAY leaving from Bunny Lane (opp Key Fitness) at 6.40pm. Tickets priced £2.50 must be purchased beforehand from Storeys or from the Box Office on 0115 9146865.

www.keyworthdramaticsociety.org.com

**Find us on Facebook :Keyworth Dramatic Society
and twitter @ keyworthdrama**

Are you thinking of getting married or having a Ball?

**Come and have a look at Grange Hall, it's a fantastic venue
for your event either big or small, with superb gardens, a
fabulous back drop for all your photographs.**

We are licensed for civil ceremonies.

Call Lisa 0115 9335808 Ext 1 or email bookings@rotpc.com

A Message from the Chairman - Georgia Moore

In the May elections the residents of Radcliffe gave a clear indication that they were looking for a change in the Parish Council. This they now have with the Council made up of eleven Independent and seven Conservative Councillors.

I am very proud to be Chairman of this Council and I am encouraged with the enthusiasm and ideas, which our new Council has.

There is already a Parish Council plan in formation, which will set out ideas and aspirations for the next four years, something never done before. This will make sure we consider in advance the very best ways to use your money wisely, keeping a keen eye on the public purse while delivering the very best service we can to our village. We are listening to you the residents and encourage you more than ever to become involved with us to help make Radcliffe an even better village than it already is. Your input is greatly valued and you would be most welcome at any of our Council meetings, where you will have a chance to speak and have your say in matters concerning Radcliffe.

Of course every community has its challenges and Radcliffe is no exception.

We have new housing, which we know we will have to take, and a green belt review not far away. When a village takes new homes, developers make contributions to the local community. Radcliffe Parish Council is determined to fight for these contributions to stay in the village of Radcliffe and not to be used in other places in the wider area of the Borough.

Our PCSO's who represent the village so well are under threat of being reduced under new cuts announced by the Police Commissioner. Working closely with Neighbourhood Watch a Public Meeting was called in July inviting Paddy Tipping the Police and Crime Commissioner for Nottinghamshire along to explain this situation and to update us on the way forward for Radcliffe. This was well attended and answered many of the questions parishioners had relating to policing in our village.

This Council is determined to address the lack of sporting facilities in our village.

Radcliffe is a very large village in the Borough and as so we believe deserves much better facilities for sport. During the next four years we are in office this will be one of our priorities.

Radcliffe has a great many interest groups for both young and older residents and I would, on behalf of the Council, like to say a big thank you to all those volunteers who help to run these associations, many who put in hours of work for the benefit of their members.

We are also very aware of the business community in Radcliffe. Our approach to

supporting them is to encourage a new business forum in which business people can meet and discuss ways of working together to make sure business thrives.

I am sure everyone would wish to congratulate our ground staff on the wonderful display of flowers in the village centre and Rockley Park, they work hard to make sure the village always looks its best all year round, in particularly in the summer months. Finally a personal thank you to our office staff whose hard work ensures the efficient running of all our village facilities.

RADCLIFFE-ON-TRENT NEIGHBOURHOOD PLAN – PROGRESS REPORT:

The Radcliffe on Trent Neighbourhood Plan continues to make good progress and is on target for submission to the Rushcliffe Borough Council in the spring of 2016.

The Parish Council obtained a significant financial grant from the Government and this enabled it to appoint a specialist planning consultant who will take the project forward through the planning policies stage and to submission.

The various Focus Groups have completed their specific researches and reported back to the planning consultant to inform the preparation of the draft plan.

In July, a panel of the Steering Committee met with the major landowners/housing developers of potential development sites within the parish to hear their proposals.

The Steering Committee continues to work closely with the Radcliffe Community Plan Group to ensure that the two plans are in broad alignment and that there is consultation with the community. A Neighbourhood Plan public consultation “drop in” exhibition was held at The Grange on 8th October to give the community a final opportunity to comment on the proposed Neighbourhood Plan.

The Rushcliffe Local Development Plan Part 1 – Core Strategy – has been adopted by the Rushcliffe Borough Council and this requires Radcliffe to have a minimum of 400 new homes in the next 15 years. There will be a review of the Green Belt around Radcliffe and it is important that the Parish Council and the Neighbourhood Plan Steering Committee are engaged with this.

An adopted Neighbourhood Plan should give the Radcliffe Community some control through the planning system of where the new housing is located and influence improvements in the local infrastructure.

After the Neighbourhood Plan has been sent for checking by the Borough Council, it is then sent for scrutiny to an external examiner, and if approved, it is then put to a local referendum in Radcliffe.

Roger Upton.

Chairman of Radcliffe on Trent Neighbourhood Plan Steering Committee

**High Quality
Social Media Profile Picture
for only £20
and get 8 studio quality ID/ Pass pictures
for free.**

LIZARC PHOTOGRAFIX
PHOTO SHOTS, FRAMING SERVICES
PASS/ ID PHOTOS
0115 933 35 80



Note:

We moved to Radcliffe Hall (British Legion main building 1st floor) 17 Main Rd, Radcliffe on Trent

**Opening hours: Monday to Thursday please call before drop in
Fridays and Saturdays Open from 9:30 till 4:00**

Email: info@lizarc.com

www.lizarcphotografix.co.uk

Money, Money, Money **ABBA** *Thank You for the Music*
Dancing Queen **Sensation** *Mamma Mia*
Chiquitita *SOS*
Fernando *Waterloo*
Honey, Honey *I Have a Dream*

FRIDAY 5th FEBRUARY 8pm
Tickets From Grange Hall
Email bookings@rotpc.com
Tel 07760 120225

RADPANTO PRESENTSThe Christmas Panto!

Performance dates 10th-13th December.

Yes it's that time again to dust off the lighting, repaint the scenery and make all the costumes. The Pantomime is up and running and ready to go, but not too late if you want to join us.

Casting will take place in September, rehearsals will be in the Grange Hall on Wednesdays with additional rehearsals from October.

We are a happy band who would welcome you if you wish to join us. The actors have the focus for the show but the backstage crew are very important and we are always looking for enthusiastic members who just want to get stuck in, be it painting lighting sewing or just making coffee.

Last year we were delighted to donate £500-00 to the Playdays Group who do a great job in the school holidays putting on events for children and £100-00 to the Junior School towards their drama works.

Our prices remain low £5-00 Adult £3-00 for children.

So come on join us it's a great way to wile away the winter months.

For tickets please contact Marie Claire 07779640666. or Pen to paper and members of the cast.

Interested in joining us ring Jo Spencer 9332401 or radpanto@btinternet.com

Find us on Facebook Radpanto.



Finance and General Purposes Committee.

Parish Finances are very similar to your household expenses, good budgeting spending within your means getting your priorities in order, with the hope of a windfall for the nicer things in life.

Our income comes from the precept levied annually; this is included in your Council tax. Our income is based on a formulae which is then applied (2015 it was 3129 properties) which works out at £84-62 per household . This amount has remained without an increase since 2012 but cannot be sustained with increased charges for amenities, staffing and maintenance of facilities. The transitional grant from Rushcliffe Borough Council will cease next year this will further increase the pressure on our finances. Our income from The Grange, Grange hall and the cemetery remain strong . The provision of Leisure facilities in Radcliffe on Trent is a major priority but we cannot do this alone, we must rely on help from grants and from Rushcliffe Borough Council.

Prudence and financial awareness is good practise and with both external and internal audits done annually I am confident the finance of this Council is carried out with due diligence and delivering good value for money

Chairman of Finance and General Purpose, Cllr J Spencer

Give your baby a head start in life! **GYMBABES®**

Gymbabes classes are tailor made for babies from 6 months (sitting) to walking

A fun filled session of exploration, using colourful gymnastics based equipment, to encourage your baby to crawl, stand and eventually walk!



TUMBLE TOTS
ability for life

The springboard to confidence for your child

Tumble Tots is Britain's leading Gymnastics based development programme for children from 6 months to 7 years



For classes, parties & other enquiries
M: 07429 845132
E: fiona.tumbletots@gmail.com
W: www.tumbletots.com/nottingham
FB: [tumbletotsnottingham](https://www.facebook.com/tumbletotsnottingham)

LESLEY CREE
OPTICIANS

PERSONAL EYE CARE
CONTACT LENSES
SPECTACLES



T: 0115 9332999

9b Main Road, Radcliffe on Trent, Nottingham NG12 2FD
www.lesleycreeopticians.co.uk



OAKLEY **JIMMY CHOO** **RADLEY** **MARC BY MARC JACOBS** **POLO**
Marc Jacobs **TED BAKER** **GIVENCHY** **GUCCI** **CONVERSE**
PRADA **BOSS** **MAX&Co** *Ray-Ban* **VALENTINO**



Christmas Late Night Shopping Evening

In Radcliffe on Trent

5-7pm Thursday 3rd December

Free Mulled Wine and Mince Pies in many of our local shops including

House into Home, LG Nails, JNightsbarbershop,

Pen2paper, Cafeno.29, Burleys, Estillo, Unwind-Wellbeing, Dent Blanche

The Flower Room, Leslee Cree Opticians, Bercote, Mode Hairdressing

Silk (with Tea at Maria's serving food)

The Extended Nottingham Tram Service

A reminder that you can use your Trent Barton Mango Card for discounted tram fares at anytime of the day or (if you have one) your Travel Concession Card for non-peak travel on the extended NET services. Just remember to touch the validator at the tram stop before getting on the service.



Planning and Environment Committee

Following the Parish Council elections in early May, I took over from Rod Brears as Chair of the Planning and Environment Committee. I should like to thank Rod for all his hard work for the Committee over many years.

The main role of the Committee is to consider planning applications relating to land and properties within the Parish of Radcliffe-on-Trent. However, the Parish Council does not make decisions on planning applications – that is the responsibility of Rushcliffe Borough Council. We can simply comment on applications and indicate whether or not we object. Our voice is heard by our Borough Councillors who are all on Rushcliffe’s Development Control Committee and we trust that they are influenced by our views.

Over the last few months, there have been two important environmental issues that we have considered. First, there is the proposal by Hutton Energy to drill one or two exploratory oil wells alongside the A52 east of Radcliffe. Oil has been extracted in Nottinghamshire for many decades and oil extracted near Eakring was very important in ensuring the mobility of our armed forces during World War II. Hutton Energy’s proposal has planning permission and has been approved by the Environment Agency in terms of environmental impact. These exploratory wells do not involve fracking for gas and Hutton Energy does not have permission to do this. Hutton Energy are still in the process of tendering for a drilling rig for the site and so it is looking unlikely that one will be secured before the end of September. Until the rig is secured, Hutton Energy are unable to programme the on-site activity or plan a promised ‘community day’ as some of the information that they would want to share with the public is specific to the drilling rig used. Further information is available at www.huttonengage.com and on the Parish Council website (<http://www.rotpc.com/harlequin-3-well-site-information/>) where reports from the Community Advisory Board, which is made up of representatives from the Parish Council, Borough Council, County Council, Residents’ Associations, Nottinghamshire Police, the local church and other key local stakeholders, are available.

The second issue relates to the flooding of Bingham Road with raw sewage, immediately in front of the Infant and Nursery School entrance, following periods of heavy rainfall. This has been a problem for some time. Consequently, the Parish Council asked Severn Trent, who are responsible for sewage disposal, to come to a recent meeting of the Planning and Environment Committee to explain what they propose to do about this potentially serious health risk. Severn Trent

have undertaken to fully investigate the problem and take action to stop it happening in future. Severn Trent have promised to report back to the Parish Council on a fortnightly basis.

Cllr Martin Culshaw, Chair of the Planning and Environment Committee

RADCLIFFE ON TRENT WWI WEBSITE TO GO LIVE ON NOVEMBER 11TH

Radcliffe U3A WWI project group are delighted to announce the launch of their website 'Radcliffe on Trent and the First World War'. The site will go live at 11 a.m. on November 11th – a memorable time and date.

In August 2014, the group held an exhibition at Radcliffe Royal British Legion commemorating the centenary of the outbreak of the Great War. Now we're bringing the exhibition - and so much more - into your homes and on to your mobile devices.

You'll be able to revisit some exhibition highlights, including drawings done by the Grange Art Group and the diary written by Gilbert Elwin about his war experiences. Our posters will be presented in an online copy of the book we published last year. New for 2015 will be a revised roll of honour of Radcliffe men who served, fresh information about the men on the memorial and how they died, project work done by Radcliffe Junior School and updated biographies of 370 local servicemen. You'll be able to go on virtual walks round the village as it was in 1914, find out how the war changed local women's work, browse old photos and watch TV interviews about our project.

We have so much for you to enjoy online. We hope you will make several visits to our site and keep in touch with your comments. Our address will be www.radcliffeontrentww1.org.uk.

We're trusting all will go well with the launch. If there are unexpected technical glitches on the day, we will go live as quickly as possible.

The site content has been created by Diana Barrett, Marion Caunt, Rosie Collins and Pauline Woodhouse.





Spitfires, pizza parties and giant water fights: the Boys' Brigade's year in review

The Boys' Brigade in Radcliffe-on-Trent has had a successful year. Not a calm one, but where would be the fun in that?

We had another very successful camp in June. The children thoroughly enjoyed an exhausting weekend of action, including two campfires, a trip to Ruddington Park, swimming, fish and chips, paintball (for the older boys!), an on-site church service and our traditional Saturday water fight. All of it took place under a baking sun which made it all the more joyful, and we knew we had done well when plenty of the children fell asleep just before their parents arrived on Sunday!

Our small but successful band continues to do us proud. In parades we seem to make a habit of putting on a show with a very young band (with an average age of eleven), and then making a sound with a quality beyond our years. Band membership has been helped by the introduction of a new Friday night programme that follows our weekly practices: one which includes pizza nights, film nights and Nerf gun battles, among other themed evenings. And, of course, we're possibly the only place in the village that offers free weekly music

tuition to children.

This academic year came to a spectacular end at the village carnival. The band again did us proud, as did the company's walking float entry. Following the successes of previous years (such as our HMS Victory, Sphinx and Yellow Submarine), our 52%-to-scale Spitfire wowed the village, so much so that parents later queued up to take photos of their children in the cockpit!

We know not to measure our success purely by our membership numbers, but rather by the enjoyment of the children. And by those standards, this has certainly been a successful year for us. With that said, there are certainly spaces in all sections for new members. Please be sure to get in contact if you feel your child can benefit from all that the Boys' Brigade and Anchor Association for Girls can offer.

In December, our company celebrates its 60th anniversary. Watch this space, because we intend to do something memorable!

Chris Bonnello, 22nd Nottingham Company Captain.

Our sections meet on the following evenings:

- Anchors Section (boys and girls aged 5-7): Mondays 6-7pm
- AA Girls (ages 8-11): Wednesdays 6:30-8pm
- Junior Boys (ages 8-11): Thursdays 6:30-8pm
- Company Section (ages 11+): Thursdays 7:30-9pm
- Band and games night (all members welcome): Fridays 7-9pm

Contact Chris Bonnello (captain, 0789 1920043) or Bob Jones (admin, 0115 9334306) for further details.

The Grange

The Grange is a more traditional venue, it was fully refurbished in 2009 and is available to hire. This beautiful building is ideal for board meetings, small meetings, Bridge or card clubs, training sessions, small birthday parties etc. Why not have a special lunch time celebration in The Grange, ideal for a family gathering? The Grange has a fully equipped kitchen for all your needs. Reception/Open Area, Radcliffe Room, Dowson Room. It is also available as an alternative space for a coffee break to allow those in a meeting a chance to get up and move around.



Contact Lisa

0115 9335808 Ext 1

bookings@rotpc.com

Prices start from £6 per hour

Radcliffe-on-Trent Residents' Association.

The Residents Association meets on the last Tuesday in the month in St Mary's Church Hall at 7.30 pm. (Except May, August and December)

We meet to discuss issues affecting the Residents of Radcliffe whether this is having speakers such as Paddy Tipping the Police Commissioner, hopefully a representative of Barton Buses or other topics of concern to the village.

The Residents Association although not a fund raising body also tries to support projects in the village i.e. in 2014 a donation was given towards the cleaning of the War Memorial.

For a membership of just £2 per household per year, you are most welcome to the meetings (includes tea or coffee) and you receive 9 Newsletters a year.

Radcliffe Community Plan

The Community Action Plan was sent out to all homes in the Parish of Radcliffe in October 2014. The Steering Group is now continuing to move ahead bringing the **Aims into Achievements**, some more easily attained than others.

Some of the achievements to date are;

- *Health & Welfare Notice Boards,
- *Band Night for young people.
- *New speed signs outside the schools,
- *Changes to the car park at the Health Centre are being worked on.

Many more are ongoing.

The Community Action Plan has also provided evidence from the Survey for other associations to find funding or as a basis for future planning.

We would welcome volunteers onto the Action Plan Working Parties to help us change **Aims into Achievements**.

Contact Sue Clegg 0115 9118779.

Radcliffe Archaeology Project

What an opportunity! Would you be interested in joining Radcliffe's first archaeological project? This could include taking part in field walks and identifying sites of interest in and around the village. You would have the chance take part in an archaeological dig under expert supervision and no doubt experience the excitement of discovery, all in your home village. We are aiming for this venture to have a strong community base, and it is open to all.

Our first public meeting to promote this initiative is likely to take place on Tuesday 22nd September at 7.30pm in St. Mary's Church Hall. Just watch out for the posters that will be on display in and around the village, confirming these details. We look forward to seeing you there.

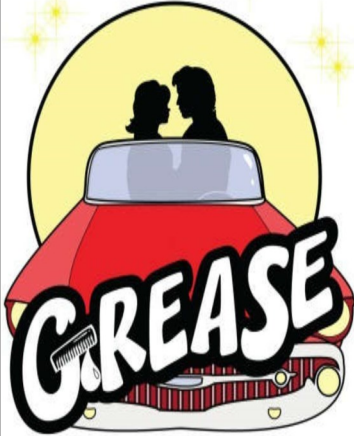
Vintage Fair

On Sunday 28th June this year, Radcliffe enjoyed its first ever Vintage Fair. Local resident Clare Lees of Vintage Darling Ltd, brought together 23 traders selling an eclectic mix of vintage goods including vinyl, home-wares, fashion, furniture, memorabilia and vintage-inspired crafts. Elsie the Vintage Caravan elegantly parked outside The Grange Hall and delighted customers with traditional cream teas served in bone china tea sets on beautifully laid tables. Guests were first welcomed in the entrance lobby by the sounds of a 1920s portable gramophone but then once in the main hall, a rock n roll DJ entertained the shoppers with a vibrant and nostalgic DJ set courtesy of Clive from Rebound CDs. Clare (Clare Hair) and Sandi (LipStickChick Make-Up) transformed both young and old into vintage sirens whilst Maria from Tea @ Maria's dished out succulent pork cobs, tea and cake. Pimms was served in the Trent Room and the kids made vintage collages and had their faces painted courtesy of Liz from The Face Store. There were plenty of very happy customers, some of them dancing as they shopped and the atmosphere was vibrant and fun. All in all the event raised £1100 for charity - £600 to Nepal and £500 to Save The Children. The date is set for next June already but if you can't wait till then, Clare is hosting another event on Saturday 10th October in West Bridgford. **All enquiries to Clare on 07896587638 or info@vintagedarling.co.uk. Clare would like to thank all her village friends for their support and encouragement which made the Vintage Fair such a great success.**



Grease Sing-a-long

Radcliffe on Trent Parish Council



Friday 16th October 2015

Doors Open at 7pm

Film Starts At 7:30pm

At Grange Hall

£5 tickets available from Grange Hall

Bring Your Own Drink and Nibbles



Clerk's Report - Village Defibrillators

The Parish Council would like to thank Radcliffe on Trent Swimming Pool Association for their kind donation which has funded two new Village Defibrillators and two new Lifebuoys for the Lily Ponds.

Radcliffe will soon boast four outdoor 24/7 accessible Defibrillators which are and will be sited at the following locations:

Grange Hall Vicarage Lane , Westcliffe Care Home Shelford Road, The Chestnut Pub Main Road and The Pavilion, Bingham Road Playing Fields.

The Parish Council will be hosting a **Defibrillator Training Event** on **Thursday 12th November 2015, 7pm in the Grange.** if you would like to attend, please book your place with the Parish Clerk, Tel: 0115 9335808 email: clerk@rotpc.com (please note that spaces are limited).

Christmas Lighting

It will soon be that time of year again and the Main Road will look fantastic. The Parish Council has invested in new bigger and brighter lamppost motifs and some of the trees on Main Road will also have string lighting. We are also working with the newly formed Business Forum and aim to bring back the small Christmas trees with lights that protrude from the shop frontages. A big thank you to our Borough Councillors Roger Upton, Neil Clarke and Jean Smith for their financial contributions also to Tesco for their grant funding. This year will see Radcliffe Main Road come alive with the Festive Spirit!



Our Annual Lights Switch On at 4.45pm on 29 November 2015 will be the best yet with lots of things planned to entertain you.

Rockley Park

The Parish Council works in partnership with many organisations and in the summer it worked with Rushcliffe Borough Council and City Greenscapes to enhance the Woodland Walk at Rockley Park with new shrubs, trees, planting and landscaping with stepping stones and a Willow Tunnel.



(Thank you to all the residents and organisations that donated plants for this scheme). Positive Futures also got involved and the young people of the village designed and helped create eight wooden sculptures that are now in pride of place along another woodland walk in the Park. The Parish Council has also been successful in obtaining match grant funding via the Nottinghamshire County Council Supporting Local Communities Fund and will soon be contracting works

to commence to address the eroded areas of the pathways in the Park. Rockley Memorial Park is a 'hidden gem' and thanks to our Groundstaff is looking great, there is always work to do in the area and it is an ongoing battle with the weeds! However we will continue to ensure that the Park is kept to a high standard and enhanced where possible.

Goodbye Hollie and Good Luck!

Hollie Thacker has come to the end of her 1 year Office Apprenticeship with the Parish Council and leaves us on the 23rd October 2015. We would all like to thank Hollie for her hard work and commitment to the Parish Council and wish her the very best of luck in her future career and don't forget to revise for your Driving Theory Test!!

Village diary

If you would like to advertise your event in the Village Diary on the Parish Council website, then forward details to clerk@rotpc.com and we would be happy to include it.

Vandalism

Unfortunately, the summer period has not been without incident, the Multi Play Unit at Bingham Road Play Area has suffered constant damage to the wooden slats and the Skate Park has also been targeted. Vandalism is an unnecessary cost to the Parish Council and we would rather spend funds providing new and exciting equipment than the cost of repairs through vandalism. Please report any sightings to the Parish Clerk or the local Police.



Well Done Lisa!

Our Hall Manager, Lisa Simpson has just completed her 7th Marathon pounding the streets of London into the early hours on 26th September raising much needed funds for Cancer Research. Congratulations on a huge achievement.



Information

For more information please go to our websites www.rotpc.com, www.radcliffe-grangehall.co.uk, Facebook Grange Hall & The Grange, Twitter @ROTPC.

Look at the noticeboards in the centre of the Village and Upper Saxondale for information on meetings etc.

“The Best Ever”

“The best ever”, appears to be the general village consensus on the 32nd Radcliffe on Trent Carnival, held on Saturday 11th July 2015. Blessed once again with fine weather, record crowds gathered en route to the Grange as they greeted the procession representing this year’s theme of “Greatest Moments in History”. The kerbside atmosphere was one of great excitement as the procession wended its way through the village with Spacemen floats, marching bands and over 200 walking participants, plus an amazing half scale World War 2 Spitfire plane built by the Boys Brigade bringing up the rear.

The large crowd already gathered in the Grange greeted the procession with great enthusiasm as they entered the arena to receive their awards from the Mayor of Rushcliffe, Councillor Francis Purdue-Horan. Set amongst the 30 stalls that varied from exotic foods and drinks to a penalty shoot out, the arena entertainment was of the usual high standard with performances by local groups and artistes. The Samba Band, Infant School Choir, Junior School Dancers, South Notts Academy Students and The Signing Choir were joined by a wonderful “Birds of Prey” display by the Falcon Centre. At one-stage 40 children from the audience assisted in the display as these majestic birds and their amazing flying antics left the audience in awe and wanting more. The Tug of War, as usual, brought young and less young together for the final heave of a marvellous day.

For those more interested in cooling off and sheltering from the mid-day sun, Grange Hall presented both Radcliffe Ladies and Men’s Choirs assisted by performances from The Trent Navigation Company Shanty Crew and a display by the Radcliffe Sword Club, with the Women’s Institute on hand serving the finest in homemade cakes and refreshments.

All monies raised at the event are destined, as usual, for local charities and will be presented at the Carnival Annual General Meeting at 7.30pm on Wednesday 14th October at the Radcliffe British Legion. All are very welcome to attend; perhaps you have suggestions to offer on making next year’s Carnival even better? It’s your day, so let us know what you think!

Next year’s Carnival will be held on Saturday 9th July 2016.



RADCLIFFE VILLAGE SHOW

The Village Show held on Sunday 6 September 2015 was a grand success, thanks to the volunteer helpers and everyone who came along and enjoyed a great day out. All the bakers, gardeners, flower arrangers, photographers and children were out in force. Even the weather surpassed itself. The Carlton Brass Band played well known tunes to welcome the villagers to the show. After the judging of the various categories, eager entrants hurried to find out if they had won a prize. All day long children and adults alike showed off their winning rosettes pinned to their chests, as did the dogs who had been awarded their prizes in another outstanding dog show. The fruit and vegetable show was held in the marquee with more entrants than previous years.



There were lots of stalls selling a huge variety of products, many running out of stock before the show had ended. We were entertained by the wonderful Trent Navigation group, who sang their interpretations of many sea shanties. The Maids of Clifton were a highlight with their traditional clog dancing. After 3 o'clock the winners in the various categories proudly received their cups and certificates.

What a wonderful day, just goes to show that Radcliffe still has that community spirit that makes it a great place to live.

Official Photographs Can Be Seen On Lizarc's Website

www.lizarcphotografix.co.uk

Click Radcliffe Village Show 2015



Radcliffe U3A was formed in 2012 and has grown rapidly to over 500 members. It is an organisation for retired and semi-retired people who live locally. We meet at 1.30pm on the first Thursday of every month, [except August] at Grange Hall.

Recent speakers at the monthly meeting have included Dr Turi King, the geneticist who definitively identified Richard III. Andy Smart who gave an illustrated talk about our local First World War hero Albert Ball. Chris Hanson the BBC antiques expert and Ian Morgan with a Victorian true-life murder mystery.

At the monthly meeting you can sign up for one of our popular away -days. Some of our recent visits have included The Kinema in the Woods at Woodhall Spa, the historic dockyards at Chatham, Jodrell Bank, Bletchley Park and the Morgan motor company.

The monthly meeting is also the place to find out about the many interest groups available. There are currently about 40 groups but this figure is growing all the time. They include Canasta, Cycling, short and long distance walking, lunch groups, a supper group, criminology, first aid, boules and bowls, French and Spanish, classical music appreciation, jazz appreciation, a real ale group, a discussion group, wine tasting and the very popular ukulele group.

For further information visit our website at www.rot-u3a.org.uk or contact Anne McLeod, [Chairman] on 07966 478873 or Penny Tytler, [Membership Secretary] on 0115 933 3011.

We look forward to meeting you.

50 Year Celebration For The Cricket Club

After 150 years on the Holme Lane ground Radcliffe on Trent Cricket Club moved onto the Nottingham Road site in 1965.

On Sunday 16th August 50 Vice Presidents, past members' wives and guests attended a special event at the Club to mark the occasion of 50 years of Cricket on the ground at Nottingham Road. Helen Taylor 92 wife of former President Alvyn Taylor topped the age chart but was closely followed by eighty year olds Harry Pike, Bill Devereux, Jim Onions, Ed Thorpe, David Evans, Pat Groome, Dennis Jelly, Nevill Bemrose, life member/former chairman Max Hopkinson and Dorothy Gough wife of former player Frank Gough and sister in law of Wilf Gough and Jim Onions.

Of those former players in attendance many had played on the old ground at Holme Lane prior to the move to Nottingham Road. The current Cricket ground on the A 52 adjacent to the railway bridge, was officially opened in July 1965 by Bill Crosier the former radio broad caster most familiar as the host of "Family Favourites", a traditional Sunday for many families in the 1950s and 60s.

The club famously played two games in the 1960s against the Lords Taverners which included many stars, such as Harry Secombe, Ian Carmichael, Leslie Crowther, Jim Laker, Clement Freud, Raman Subba Rowe, Julian Holloway, and many more, not forgetting Miss World Eva Rubers- Staier.

The 50th anniversary also marked the launching of the publication of the clubs History dating back to the very beginnings prior to 1800 and going right up to the 2014 season

Max Hopkinson.

The event was organised by Life member Brian Taylor.



Enhancing the Village Amenities

The Amenities Committee is responsible for a range of village facilities, the major ones being the playgrounds, the Cemetery, the Cliff Walk and Memorial Gardens and the nature reserves of the Lily Ponds and Dewberry Hill. The Committee is currently planning how to use its budget over the next four years to sustain and enhance those facilities. For example we have been looking at the playgrounds, noting which equipment needs repair or renovation and which needs replacing; and we have also visited other playgrounds to get ideas about which new equipment might enhance our play facilities. We are also working in partnership with the Canals and Rivers Trust, the Notts Wildlife Trust, Rushcliffe and Nottinghamshire Councils and our own local Conservation Volunteers to consider how best to manage our nature reserves, ensuring that we enhance their value as wildlife habitats whilst making them accessible and attractive to human visitors! Recently we have been quietly enhancing the Memorial Park too; and we hope that visitors of all ages are appreciating the new woodland walks, woodland sculptures and new planting. Radcliffe is fortunate that over the years the Parish Council and its many partners have developed a good range of amenities for residents of all ages; and I am particularly grateful to the outgoing chair of the Amenities Committee, Mrs Janet Maughan, for her work. However we are always open to suggestions about ways in which we can improve them or make better use of them. If you have any suggestions please let the Parish Clerk know and we will see if we can incorporate them into our plans.

Cllr John Thorn, Chair of the Amenities Committee.



Don't ever be bored!

We have so many different groups to join including; Bridge, Pilates, Tea Dance, Music Club, Local History, Ceroc Dancing, Caterpillar Music, Tumble Tots, Needlecraft, Knitting, Diet & Fitness, Children's Cookery, Handicrafts and much more.....

Please look at our website for more details of what is happening at The Grange and Grange Hall
www.radcliffe-grangehall.co.uk

The deadline for articles and adverts for the next issue will be
15th January 2015

Send to Lisa at
bookings@rotpc.com or phone
0115 9335808 Ex1

Send as JPEG, PDF or WORD

Please note:

Any opinions expressed or inferred in this Newsletter are not necessarily those of the Parish Council.



1st Class FREE with this advert



****NEW** Dance & Drama classes R.O.T**

Established in R.O.T since 2010 providing No pressure!
No exams! Just Fun! Dance & Drama classes from age 2 +



****NEW** Classes** Starting from Saturday 12th September 2015
@ South Nottingham Academy from 9:30am – 1:00pm

Styles include: Baby Ballet, Ballet, Musical Theatre, Street & Drama

Contact: 07796352969 **E:** simplydancenotts@gmail.com

Forthcoming events at
The Grange & Grange Hall

Big Hero 6

Radcliffe on Trent Parish Council

Friday 16th October 2015

Doors Open at 4pm

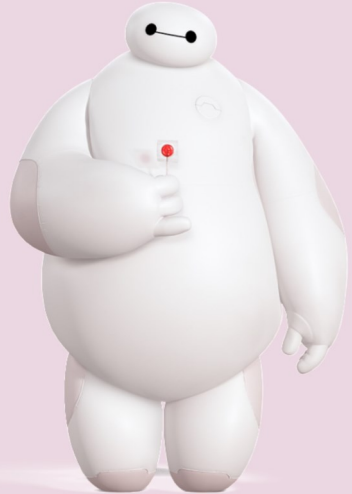
Film Starts At 4:30pm

At Grange Hall

£3 tickets available from Grange Hall

Refreshments available

Children Must be accompanied by an adult



VAT Number 103 9759 07



**Christmas Lights Switch on
With Attractions**

Sunday 29th November

4.45pm

The Grange

THE THIRD AGE TRUST



THE UNIVERSITY OF THE THIRD AGE

Various U3A groups at The Grange & Grange hall every week.

For details contact Anne McLeod, [Chairman] on 07966 478873
or Penny Tytler, [Membership Secretary] on 0115 933 3011



CHRISTMAS 2015 PLANS

On **Sunday 29th November** following the **Food Fayre in Grange Hall** in support of **Local Charities**, there will be the annual Christmas Lights Switch-on Ceremony at 4.45pm, including a visit from Santa and some very special guests.

There will be mince pies and mulled wine available for purchase.

-o0o-

Our annual joint event with **South Notts Academy**, being a **Christmas Party** fun afternoon for the over 65s, will take place on **Monday 14th December** and to prevent overcrowding will be limited to 150 guests. Students from the Academy will again be playing a leading role in either providing the entertainment and afternoon tea or just being there to help.

Tickets at £1 each are available from the Grange Hall Office but as demand normally exceeds supply an early purchase is necessary.

-o0o-

Also on the 14th December, Christians Together, with the South Notts Academy, will have Carols in The Grange grounds at 6.30pm, to which all are welcome.

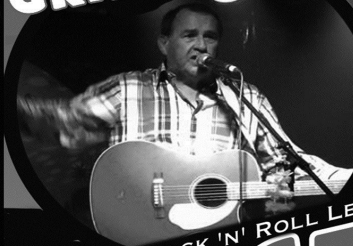
-o0o-

Coffee and mince pies will be served on **Saturday 19th December** from 10am - 12 midday when councillors will be on hand to greet residents.

-o0o-

On **Sunday 20th December** the **Nottingham Concert Band** will be making a return visit to Grange Hall for another festive concert. This year's show will start at 3.00pm with tickets costing £5.

GRANGE HALL



SUNDAY
27 DECEMBER
8.00 PM

BRITISH ROCK 'N' ROLL LEGEND AND WEST END MUSICAL STAR

VINCE EAGER & The Memphis Tones

BY POPULAR REQUEST

YEAR SIX DISCO

available from 01159 335808 & 07887655405

Tickets £10 from PEN2PAPER & GRANGE HALL

RADCLIFFE PRE-SCHOOL PLAYGROUP LADIES' NIGHT

Radcliffe on Trent Pre-school Playgroup presents its annual ladies' pamper evening and gift fair on Wednesday 18th November from 7.30pm at The Grange Hall, Radcliffe on Trent. With an expected 35 stalls this is a great chance for ladies to browse and buy gifts for all the family for Christmas and have a pamper session.

Tickets, £3.50, from Pen2Paper, the Grange, or Playgroup (07505 606447/ rotplaygroupevents@gmail.com), includes a complimentary glass of wine and mince pie.



For more details contact the Hall Manager on
9335808 Ex1 or bookings@rotpc.com



Help more animals by adopting from us



Radcliffe Animal Shelter

- Animals rehomed from Radcliffe animal shelter last year
682 cats 330 dogs and 155 small animals and birds.
Help more animals by adopting from us.
- All animals are health checked by vets, dogs
and cats neutered, vaccinated, microchipped,
wormed and de-flead.
- All animals are given a voucher for a free vet health
check after adoption with their new owners



**Opening Times
for viewing
Everyday
12.30pm - 3.30pm**

32 Nottingham Road, Radcliffe-on-Trent,
Nottingham NG12 2DW
info@rspca-radcliffe.org.uk www.rspca-radcliffe.org.uk



Telephone: 0115 933 4422

**RSPCA Radcliffe Shelter Trust
Registered charity number 503759**



SOUTH NOTTINGHAMSHIRE ACADEMY AND SIXTH FORM

Music Department summer success

The summer term is always busy for the Music Department at South Nottinghamshire Academy and this year was no exception. The musicians from the Academy showcased their talents in school events as well as performances in the local community.

The Music Department summer concert on Thursday 25th June was a huge success with excellent performances from our small flute, clarinet and saxophone ensembles as well as our larger ensembles including the swing band, concert band and samba band. Some of our musicians and singers from Years 7 to 10 also performed solos and duets developing their confidence in performing under pressure in front of an audience. The first Youth Gig took place on Friday 3rd July with the support of the Parish Council. A small group of Year 9 and Year 10 students attended regular meetings with the Parish Council to plan and organise this event and their hard work really paid off with a fantastic evening enjoyed by all. Bands included current students from SNA (Tom McCartney, Kaya Jobson, Rhea Jobson, Travis Coyne and Max Ainsley), ex-students from SNA and three students from other secondary schools in Nottinghamshire. Two of the bands that performed at the Youth Gig also performed on the stage at Radcliffe Carnival this year broadening their experience of performing in public and in different venues. The Samba Band also performed in the arena at the Carnival and won first prize for their float in the procession, something that they all feel very proud of. The final music event of the school year was the annual music tour of the junior schools on Wednesday 15th July in which the various ensembles and musicians performed at Radcliffe on Trent Junior School and Cotgrave Candleby Lane School. It is a privilege to see how much the younger students enjoy watching the students that used to go to their school and how inspired they feel as they applaud the performers. We look forward to seeing the Music Department continue to expand as we welcome a large Year 7 cohort to the Academy in the Autumn Term and we cannot wait to use our new rehearsal and performance spaces in our new build from September 2016.

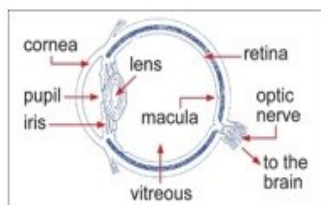


Diet and Healthy Eyes



We don't have to look very far to find someone telling us what to eat and what not to eat – magazines, newspapers, TV and websites are all used to get the message across. So is it perhaps surprising that lots of people don't realise that what they eat can affect their eye-sight? Our eyes can suffer when the food on our plates doesn't contain certain key ingredients.

A Quick Science Lesson



The macula is a very small (but also very important) part of the retina at the back of your eye – about the size of a grain of rice! Light focused onto it by the lens is used by special cells to help to create clear colour vision. Like all cells, these need nutrients to

keep them healthy – that's where your food comes into it! Two important nutrients are called **lutein** and **zeaxanthin**. These helpfully do two things:

- Work to preserve cells
- Filter out potentially harmful blue light

This helps to protect against eye diseases such as Age-related Macular Degeneration (AMD). AMD can affect anyone, but over 60's are particularly at risk – in the UK over 600,000 people are affected.

So what shall I eat?

When you next find yourself using your fingers to count off your daily intake of fruit and veg, check if any of these have found their way into your favourite dishes.

- Lutein sources include yellow peppers, mango, bilberries and green leafy vegetables especially kale and spinach
- Zeaxanthin sources include orange sweet peppers, broccoli, corn, lettuce, tangerines, oranges and eggs

Other helpful ingredients are oily fish, nuts, carrots & wholegrain cereals.

There is much much more that could be said! **Ask your optician the next time you're in for your regular eye health check.**

Harry Hughes - **B**OWLER AND **C**HARSLEY OPTICIANS



BOWLER AND CHARSLY

20-22 Shelford Road
Radcliffe-on-Trent
Nottingham
NG12 2AG

Tel: 0115 933 3930

Email: radcliffe@bowlerandcharsley.co.uk

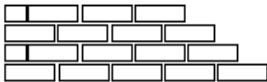
Web: www.bowlerandcharsley.co.uk

NHS & Private / Spectacles / Contact Lenses
Eye Care / Sunglasses



JAMES P SPENCER LTD

Building and Landscaping Contractors



For a free no obligation quotation, please don't hesitate to give us a call. Our portfolio encompasses the whole contract spectrum. House Builds, Extensions and landscaping.

Tel: (0115) 933 3033
www.jamespencer.co.uk

Mail: office@jamespencer.co.uk
38 Orford Avenue,
Radcliffe on Trent, NG12 2DD



DAPPERDOGS

Dog Grooming & Bathing Services

Qualified Dog Groomer
Friendly Spacious Salon
All Breeds, Ages & Sizes Welcome



Pop in for a free consultation or call to make an appointment:

Dapper Dogs @ The Dog Room, 23 Main Road,
Radcliffe on Trent, NG12 2BE (Wayside Adhesive Building)

Tel: 0330 333 4791 www.dapperdogs.club

Learn to fence at



Radcliffe
Sword Club

Adult (15+) and Junior (8+)

Beginners' Foil Courses

Clifton Leisure Centre

8 sessions starting Tuesday 12th Jan
2016

All kit and qualified coaching provided

Contact 0115 911 0050 or

**RADCLIFFE FOOD AND GIFT
FESTIVAL**

Sponsored by Lesley Cree Opticians

&

Mason Infotech

at

Grange Hall

Sunday 29th November 2015

from 12.30pm

Adults £3.00 under 12 Free

In aid of Local Charities

~o0o~

Christmas Village Lights Switch

On at 4.45pm



At Grange Hall

Radcliffe-on-Trent

On Sunday 20th December

Starts at 3.00pm

A Christmas Afternoon

With the

Nottingham Concert Band

Refreshments Available

£5

South Nottinghamshire
Academy &

Radcliffe-on-Trent Parish
Council

Over 65's Christmas Concert

With Festive Tea

Monday 14th December 2015

2.00-5.00pm



£1

Radcliffe Conservation Volunteers

We are an informal group of Radcliffe residents willing to 'get our hands dirty' doing practical conservation work in the green areas of the village.

We were stimulated into action by the Parish Council's acquisition a couple of years ago of two wonderful green assets for the village: the Lily Ponds area at the foot of the Cliff Top and Dewberry Hill.

We have organised work parties in the former area, clearing paths, picking litter and plucking the invasive Himalayan Balsam. In addition to this regular light work, some of us are engaging in such heavier work as clearing gullies of debris and deepening ditches to ease water flow. We have plans too to clear and seal the small pools on the left side of the steps going down from Rockley Park.

A highlight of the year was undoubtedly the Bioblitz weekend, when we worked with the Parish Council, the Nottinghamshire Wildlife Trust and the Canal & River Trust to promote two days of exploration and enjoyment of this area. This was preceded by a well attended series of talks on the history, geology, flora and fauna of the area.

This focus on the Lily Ponds doesn't mean that we have forgotten Dewberry Hill. We will be in discussions with the Parish Council on what needs to be done to maintain and enhance it as an environmental asset to the village.

If you would like to join in our activities, contact **Dave Barton (9332633)** and we will put you on our mailing list.



YOUR CHILD DESERVES THE BEST



"Millfield is **exceptional, caring, attentive, fun, nurturing and wonderful.**

It is hard to put into words without it sounding like an Oscar speech the superb nature of this nursery. The outside space is unbeatable, the activities are great fun and innovative, but most of all, the staff are caring, kind, enthusiastic, skilled and a privilege to know.

I have absolutely no hesitation in recommending Millfield Nursery to any parents."

Sheila Greaves (Parent)



This beautiful, unique nursery is only a five-minute drive away from Radcliffe, via the Cropwell Road underpass. Call us today on **0115 933 4085**.

Millfield Nursery School, Tythby Road, Cropwell Butler, Nottingham NG12 3AJ



Visit our website www.millfieldnurseryschool.co.uk

WORKING GROUP TO CAMPAIGN FOR MORE TRAINS IN RADCLIFFE

Your new parish council wants to continue previous work to get more trains to stop in Radcliffe as a priority for the village.

The working group consists of Parish Councillors, 3 local residents with a great deal of knowledge about trains and transport, and a Radcliffe Borough Councillor.

We and Nottingham County Council have asked for an hourly daytime service from Radcliffe as part of the agreement for the East Midlands Trains franchise extension in October 2015.

We are particularly concerned about commuters who presently can get a train to work in Nottingham but often have to use a bus to get home!

Please help us by using the train. Day return tickets can be cheaper than the bus and the journey only takes 11mins with no traffic delays!

Representations have been made to Ken Clarke MP to support the case for Radcliffe to the Dept. of Transport.

If you feel as strongly as we do about this please contact us and we will forward your views on to all the interested parties.

If we are not successful in October, we intend to increase our efforts and community involvement to force these improvements into the new franchise agreement coming in 2017.

We have also been asked to take part in the "Adopt a Station" scheme to improve our local station.

A new resident member of our group has agreed to lead on this.

The parish clerk and I would be very interested to hear from you if you would like to help and join this team.

Pam Thompson

PC Chair of Train Working Group



Radcliffe-on-Trent Drama Group'

**'Lord Arthur Savile's Crime' a comedy by Oscar Wilde dramatised
by Constance Cox**

Tuesday 10th - Saturday 14th November 2015 in Grange Hall

This play is based on an 1890s story by Oscar Wilde about Lord Arthur Savile who is engaged to lovely Sybil Merton. Her pet cheiromantist Podgers has read Lord Arthur's palm and foretold he would commit a murder.

Lord Arthur desires a blissful married life and therefore feels duty bound to get the murder over with first. Despite help from his butler and the cheerful anarchist Winkelkopf, attempt after attempt fails.

Then news comes that Podgers is a charlatan: Lord Arthur is free and the carriage awaits to take him to the wedding rehearsal. Alas before he gets any further.....

The play is witty, clever and amusing, everything you'd expect from an Oscar Wilde short story in fact.

All tickets are £8 each (including tea or coffee and programme) and are available via the website or from Pen2Paper Stationers in R-o-T or by phoning 0115 912 0129. Please get your tickets early to avoid disappointment.

NB. Customers ordering tickets on-line via the website will still pay just £8 and you can use a credit card or debit card with no added charges

www.radcliffe-on-trentdramagroup.co.uk .

Why not book a pre-theatre meal - available from 5.30pm at

Café Piano

0115 9332233

Dogs ... or rather their owners!

Perhaps its that time of year again, but recently there have been increasing reports of dog mess on the paths of our two nature reserves, at the Lily Ponds and Dewberry Hill. Dog walkers have generally been responsible about ensuring their dogs' mess is removed and disposed on the Cliff Walk, and thank you to those owners who are. But its appears some are less responsible when it comes to the nature areas. Perhaps they think that, because it is wild and bounded by nettles and scrub, it doesn't matter ... but it does. The paths are cut for the benefit of all walkers and it is most unpleasant to find dog mess in the middle of a narrow path. If you do walk your dogs in these areas, please take note.



Streetwise is a new “social enterprise company” wholly owned by Rushcliffe Borough Council, that carries out grounds maintenance and cleaning services across the East Midlands.

The Parish Council pays Streetwise to litter pick and empty litter bins in the centre of the village every morning, to keep Radcliffe looking clean and tidy. We believe that this service is invaluable in helping to keep the village centre an attractive place to shop or just spend time in.

If you are concerned about a major litter problem in the centre of Radcliffe and the Parish Council office is closed, then Streetwise can be contacted on

0115 – 914 8408 or by email at streetwise@rushcliffe.gov.uk

Are you a local group from Radcliffe on Trent or a non-profit organisation?

Have you an AGM coming up?

Did you know that you can have a room at The Grange once a year for free?

Contact the Hall Manager on 9335808 Ex1

JONATHAN COLES PLUMBING AND HEATING

- .FIXED PRICED BOILER OR FIRE SERVICE £45
- .CENTRAL HEATING INSTALLATION, BOILER REPAIRS AND REPLACEMENT.
- .BATHROOMS AND SHOWERS.
- .LANDLORDS GAS SAFETY CHECKS
- .CENTRAL HEATING POWER FLUSHING.



(0115) 9334469 MOB 07980 608589

YOUR LOCAL GAS SAFE REGISTERED PLUMBING AND HEATING ENGINEER

EMAIL: colesheating@engineer.com

A.W. LYMN

The Family Funeral Service

Funeral Pre-Payment Plans



Should you consider a pre-arranged funeral plan, we are sure that your choice of funeral director is just as important as your choice of plan.

A. W. Lymn, The Family Funeral Service, has been serving families in Nottinghamshire and Derbyshire since 1907 and remains under the control of the founders great and great-great grandchildren.

Before purchasing a funeral plan with A. W. Lymn we recommend that you talk directly with us, you can call in to any of our branches or simply telephone for advice.

Contact our Radcliffe office on:

0115 933 2257

Or email radcliffe@lymn.co.uk

Perfect Choice
Funeral Plans

"Our family serving your family"

www.lymn.co.uk



What a wonderful success!

The Photo Coach Club met for the first time on **Thursday the 30th of April** at **The Old Grange, Radcliffe-on-Trent, Nottingham** and so many people attended that we had to go and fetch more chairs. If you missed it – no problem – we'd love to see you next time.

CLUB MISSION STATEMENT

Our intention is to build a thriving camera club based in Radcliffe-on-Trent that is **welcoming** to photographers of **all levels** of experienced. You might have only just bought your first camera, be a **total beginner**, a keen hobbyist or maybe a serious amateur or even a pro. It doesn't matter, because we all share the same **passion for photography** and the club is all about creating a **friendly inclusive atmosphere** for everyone looking to **improve their photography**.

We will be meeting every **1st and 3rd Thursday** in the **month** from **7pm – 9pm** throughout the year. Membership to the club is just **£5.00** a meeting.

So what do we have planned?

We shall be filling the evenings with a **well organised** delivery of **top photography tricks and tips, Q&A sessions, trouble shooting sessions** and guest **talks**. We'll be organising **projects and competitions** to get involved in, **workshops** to take and **outings** to go on.

However; to us it is important that everyone find their **own level of involvement** at the club. With that in mind all of our activities are designed to offer a **varied range of involvement** and contribution to fit in with our member's **passion, confidence and time commitments**.

Best wishes

Drew

My Courses Website: <http://www.drewsmithphotographycourses.co.uk/>

My Blog: <http://drewsmithphotography.wordpress.com/>

My Website: <http://www.drewsmithphotography.co.uk/>

Drew Smith
PHOTO COACH

Holiday Adventure and Discovery with Hyde Barker Travel

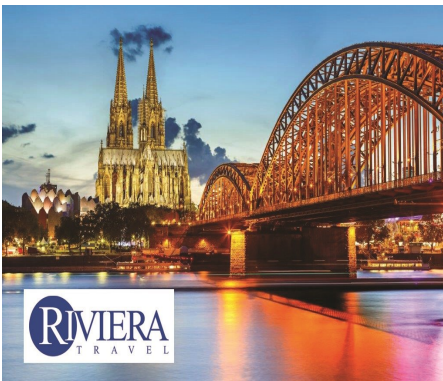
Grange Hall in Radcliffe was the venue for Hyde Barker's 'Adventure And Discovery Show' on 24th June and proved a great success. Exhibitors from adventure holidays companies including Silver Fern Holidays, Insider Journeys, Jaltour, Exodus and Transindus held presentations, and the Hyde Barker team were there to give expert advice and answer questions about some of this years most exciting holiday destinations.

Based in Southwell, Hyde Barker are the only independent Travel Agency within easy reach of Radcliffe on Trent, and pride themselves on offering unbiased, independent advice, excellent value for money with a 100% financial guarantee, and providing a complete door to door travel service.

Director, Barbara Cray said "As a member of AITO we offer a wide range of specialist holiday products that aren't available elsewhere. We also have the advantage of being able to sell holidays with brands such as Titan, Saga and Exodus that haven't been available through agents in the past. We offer the same pricing as going direct, but with the added benefits of expert, tailored advice and full service."

Their monthly presentation evenings are a great way to gain inspiration for your next holiday, and their next event, which will be held at the Pie and Poppy in West Bridgeford on 7th October, will be focusing on New Zealand, which Hyde Barker have particular expertise on through their sister company Silver Fern Travel.

Hyde Barker Travel will also host the Southwell Travel Show on 23rd January 2016 at the Saracens Head in Southwell, which will see the gathering of the largest number of UK Independent tour operators outside the National travel shows. Over 20 tour operators will be joining the team at their biggest event of the year, where there will be opportunities to speak directly to experts about travel and forthcoming holiday plans and to take advantage of exclusive show day offers. For further information visit www.hbtravel.co.uk, ring 01636 816262 or follow on Facebook



RADCLIFFE-ON-TRENT ADVICE CENTRE

More to Come?

Of late, enquiries have fallen below the record-breaking levels of recent years but is this simply the proverbial “lull before the storm”?

Entitlement to Welfare Benefits and the associated form filling remain by far the main areas on which our advice and help are sought. The impact of the changes to welfare provisions introduced in the Summer Budget have yet to be felt by those affected.

While pensioners and the disabled are generally not affected, the main changes include a 4-year freeze on working age benefits, the Benefit Cap lowered to £20,000 and reform of Tax Credits and to housing support especially for those aged 21 or under.

On the horizon there is also the phased local introduction of Universal Credit. For those of working age it will replace and merge into one payment the present means tested benefits and tax credits.

Apart from Welfare Benefits we offer advice on a wide range of issues including debt, tax, employment and housing problems. Over the last year or so we have seen a significant increase in Consumer problems. There has also been a marked increase in the number of Blue Badge applications.

Our advice is free and confidential. On a Thursday morning we can be found upstairs in St. Mary’s Hall, Main Road. Why not drop in for a chat if you feel you may benefit from our service? No appointment is necessary.

If you are interested in volunteering to work with us, please feel free to come in on a Thursday morning to meet us. A warm welcome awaits you.

Obituary - Florence Price

Florence was a Yorkshire lass but was a resident of Radcliffe for many years and was an outstanding public servant. She died recently, aged 98, in Adbolton Nursing Home after an amazingly fit and full life. Florence served on the Parish Council from 1995 until 1999, following long service on Nottinghamshire County Council for a city ward. Florence was Chairman of the County Council in 1988 and in 1991 she was awarded the OBE in the Queen's Birthday honours for her services to rural affairs. Florence was a keen rambler and was often to be seen striding purposefully along the Cliff path in later life even though she had become registered blind. She always knew where she was going! Florence had a lifelong commitment to her Methodism as well as her socialism and a memorial service was held for her at the Radcliffe Methodist Church on the 18th September.



The Next Four Years

As Parish Councillors freshly elected in May, we are full of ideas about what we would like to achieve over the next four years, of how we can help to make Radcliffe an even better place to live.

We have decided to draw up a four year plan, so that we can work out priorities and ensure that our activity is phased, so as not to stretch our limited financial and staffing resources.

We are aware that we don't have a monopoly of ideas – far from it! So, we have written to our local County and Borough Councillors, the local business community and the wide range of village groups, asking for their suggestions.

Of course, we shall also be taking on board the proposals that emerged from the village's Community Plan, with its amazing participation level of 52% households.

We know that you too will have your views on the needs of the village.

The purpose of this article is to ask you as residents to come forward with your ideas of the activities that the Parish Council should consider undertaking during the next four years.

What do you think the village is lacking? What could we do better? Some suggestions may be large-scale and require considerable investment (a leisure facility?), while others may be modest and cost-free (a suggestion box?) but please do share them with us.

Submit your ideas in whatever format you wish to the Parish Clerk, Jacki Grice, at clerk@rotpc.com or by delivery to The Grange.

We look forward to hearing from you!




M.A. Mills Funeral Service

(Formerly C.D. Alcock Funeral Service) Proprietors Michele and Anthony Mills since 2001

*Personal
and sensitive
service*

Independent Family Run business with all calls & arrangements personally dealt with by the proprietor.

- A Traditional Service to All Areas at All Times
- Pre-payment Plans Available
 - Monumental Masons
 - Home Visits
 - Mercedes Fleet
 - 24 Hour Service



Tel: 0115 933 6906

38 Main Road, Radcliffe on Trent, Nottingham
www.mamillsfuneralservice.co.uk



RADCLIFFE LADIES CHOIR have had quite a busy year. Back in April, we went on tour to Suffolk. On the journey down to Lowestoft, where we stayed, we sang in Ely Cathedral which was a wonderful experience for us all. We stayed just outside Lowestoft and were able to have a look round the area and take in the sea air before going on to sing in Aldburgh Church. Aldburgh was, of course, the home of Benjamin Britten and the church his place of worship. His headstone is in the church graveyard next to the headstone of Peter Pears, his life-long friend. After the concert we returned to the hotel and enjoyed each other's company in the time honoured fashion.

On the 4th July we held our Summer Concert in St Mary's Church which had an "Americana" theme to it. Our guests were the Teddy Fullick Jazz Quartet which really made the concert go with a swing and everyone appeared to enjoy it judging by the comments received afterwards. We also appeared at The Carnival on the 11th July.

Following the August break, we started back to rehearsals with a Workshop on the 5th September which was open to anyone who likes singing in the hope that they might like to join us. By the time you read this article we will have taken part, together with the Radcliffe Male Voice Choir, in a concert on the 17th October held at Corpus Christi Church in Clifton. We have been working on our Winter programme since September which will be included in our Christmas concert on Saturday 12th December and Christmas Tree concert on Thursday 17th December at West Bridgford Methodist Church. I hope that as many of you as possible will come along to enjoy some festive music and to get the feel of Christmas.

In 2016 the choir will celebrate 25 years of Friendship through Singing in style with various events including a commissioned piece from Canadian composer Sarah Quartel, whose work we have already included in our repertoire, and a concert tour to Northern Ireland in April which we are all looking forward to. We also have concerts arranged with Bestwood Male Voice Choir in St Barnabas Cathedral and Mansfield Male Voice Choir at Queen Elizabeth Academy in Mansfield. We have another busy year ahead!

The ladies of the choir would like to thank everyone for their support in attending our two concerts held in Radcliffe each year and trust that you will continue doing so. If you are interested in joining the choir, please check on our web-site www.radcliffeladieschoir.co.uk. for details or contact the Secretary on 01159 123660. You can also follow us on facebook or @radcliffeladies on Twitter.

Sheila Brumfitt

safer neighbourhoods



Rushcliffe South

PC Steve Mathias 2431

Phone:101 Ext 850 6570

Mobile:07525 226687



saxondaleselfstorage.co.uk

...for all your storage needs

- ✓ Great Value for money
- ✓ Secure Site
- ✓ Easy Access



t. 0115 933 1777

e. info@saxondaleselfstorage.co.uk
St James Business Park NG12 2JP

www.saxondaleselfstorage.co.uk

The Radcliffe-on-Trent Parish Council Newsletter goes out to 4,000 home and business's in the Parish. If you would like to place an advert contact Lisa on 0115 9335808 Ex1 or email

bookings@rotpc.com for more information. Block bookings paid in advance for three consecutive editions will get 10%

Rates:

Full page.....£105 (inc.VAT)

Half page.....£56 (inc. VAT)

Quarter page.....£30 (inc. VAT)

These can be landscape or portrait

Buttercross Veterinary Centre

Richard Beadle BVetMed MRCVS



.....

Bingham. Long Acre, Bingham, NG13 8AF

Tel (01949) 837571

Monday-Friday 8am-6.30pm and Saturday 8am-12noon

Radcliffe. Main Road, Radcliffe-On-Trent, NG12 2FD

Tel (0115) 9110144

Monday-Friday 8.30am-6pm and Saturday 9-11am

Cotgrave. Candleby Lane, Cotgrave, NG12 3JG

Tel (0115) 9893711

Monday-Friday 8am-6.00pm and Saturday 8am-12noon

Surgeries are all by appointment

www.buttercrossvets.co.uk

Radcliffe and District Probus Group – Opportunity Knocks

Question? Where can you keep the brain cells active and your digestive system in fine fettle with a high quality lunch?

Answer: If you are a retired or even semi-retired gentleman and still retain an interest in the world around you then look no further than the Radcliffe Probus Group. We meet fortnightly on Tuesdays at Ashmores restaurant in the village - for good company, a drink or two and a lunch-time talk. Recent topics have included the work of the Samaritans; the life of a butler to the incredibly wealthy; Hitler's V1 rocket; and a personal account of one woman's journey from living in Singapore to the suburb of West Bridgford. And, just in case you want more of a social life too, we also organise lunches out with wives, sweethearts and significant others, as well as trips to near and not so far.

Interested! Want to find out more! Contact David Brooker on 9372418 or Angus McKechnie on 8486239. You will be made most welcome.



The Radcliffe Manor House

Awarded Top Rating By Notts County Council

We are very pleased to let you know that following a review of the Home, Notts Country Council has awarded us their “Band 5” rating. This is their top rating and represents the highest level of residential care available in Nottinghamshire.

The Radcliffe Manor House is a residential home for the elderly opposite St Mary’s Church. We are a Home that provides a safe, caring and stimulating environment for 25 elderly residents that can no longer live independently.

This year we have been working hard to raise our profile in Radcliffe and the surrounding community as a surprising number of people do not know we are here! If you are looking for a Residential Care Home for a loved one – please bear us in mind.

If you would like any more information:

Please call the Manager, Karen Squire on 0115 9110138, or visit our website www.radcliffemanorhouse.co.uk



The Dowson Room - The Grange

The Dowson Room retains it's old fashioned style while benefiting from lots of window light.

The room is suited to use for small meetings and presentations. It is ideal for small family gatherings such as a birthday party or meal.

Contact Lisa 0115 9335808 Ex1
Email bookings@rotpc.com



A Golden surprise for Vince!

Radcliffe on Trent resident Roy Taylor, was a pioneer of British Rock 'n' Roll in the mid 1950s under his professional name of Vince Eager and has been a professional entertainer ever since. In June Vince was invited by the producers of the upcoming new Billy Fury docu-movie "The Sound of Fury", to attend the premier in Billy's home city of Liverpool on June 18th. Having been Billy's flat mate, and a major contributor to the movie, Vince was invited by the producers to make a speech and answer any questions on Billy the audience may have.

The guest of honour at the premier was Billy's 94 year old mother Mrs Jean Wycherley whose stage presence, and amazing rendition of Billy's hit "I'll Never Find Another You", mirrored Billy's charisma and vocal talents and left the audience in no doubt as to where Billy got his from.

It was following the presentation of a huge bouquet to Jean that she turned the tables on Vince and presented him with a Gold Disc for "the outstanding world wide sales" of his Western Star Records 2014 album "Rockabilly Dinosaur". In accepting his award from Jean, an emotional Vince responded by joking that it had only taken him 75 years to do it, a reference to his recent 75th birthday, and the title of his recent album release, "75 Not Out".

Vince will be appearing in his 8th annual Christmas Show at the Radcliffe's Grange Hall on 27th December of this year.

Radcliffe on Trent Lions Club

Time on your hands? Come and join us!

The Radcliffe on Trent Lions Club is actively seeking new members to join us in our fund raising and service activities.

Over the last 12 months we have:

- held a Trad Jazz Night, which raised £2,400,
- held a Quiz evening which raised £1,000,
- sold raffle tickets at the Nottm Beer Festival which raised £400,
- assisted at the Radcliffe Food & Drink Festival,
- sold toys and jewellery, and assisted with the street collection at the Radcliffe Carnival,
- held a ladies Fashion Show which raised £600,
- collected spectacles for recycling for use in eye camps in Africa, India and Eastern Europe.

We have made donations including:

- £600 to the Notts Hospice,
- £200 to the Radcliffe Fish Scheme towards their summer outing,
- £700 to the Radcliffe Manor House towards building repairs,
- £200 to the Nepal Earthquake Appeal,
- £150 to the Alzheimers Disease Research,
- £50 for Sightsavers,
- £150 for the Ebola Appeal,
- £100 for Kids Aid Tanzania,
- and £100 towards Empowerment of Widows (sewing machine project, India).

Socially we meet for an annual dinner, an annual BBQ, and a 'friendly' interclub indoor bowling match, as well as other outings.

We are 'ordinary people doing amazing things'. So why not join us? We meet on the 1st and 3rd Thursday each month at 8 pm, upstairs in the Chestnut pub, Main Road, Radcliffe. This is an opportunity for you to sit in on one of our meetings to find out more about us.

Future fund raising activities include:

Friday, 25 September – Fashion Show at Grange Hall, tickets now available from Pen2Paper.

Saturday, 12 March 2016 – Jazz Night with the Matt Palmer Band

& we will also be fundraising again on 10 October at the Nottingham Beer Festival.

Please phone Tim Timson 9332671 or Roger Upton 9333881 for more info.

Photos of Our Summer



The Annual Fun Day



The Grange Grounds



Lily Ponds

Village Show



Rockley Park



Radcliffe Carnival



Bio Blitz Day



Radcliffe Skate Park

As a primary school parent, are you concerned that...

- ...your child's school **class size is too large?**
- ...your child is **not challenged or stimulated enough** at school?
- ...class **disruption is impacting on your child's learning?**



"Our daughter had been attending our local village school, but we felt that the large number of children in her class wasn't ideal. So we decided to move her to Colston Bassett School.

Now she doesn't come home frustrated or bored, just very satisfied and stimulated because she is taught in a stress-free environment in small classes by great teachers.

It is the best decision we have ever made, as she is now so happy and confident. We would highly recommend that you visit to fully appreciate just how special this school is."

Mr and Mrs Brasher

Don't delay your child's education any longer.
Call **01949 81118** to make the change.



**COLSTON BASSETT
PREPARATORY SCHOOL**

~ INDEPENDENT SCHOOL FOR CHILDREN AGED 4-11 YEARS ~

www.colstonbassettschool.com

School Lane, Colston Bassett, Nottingham NG12 3FD