

# **Consultation on admission arrangements for community and voluntary controlled schools 2025-2026**

**Period of consultation: 2 October 2023 to 26 November 2023**

Nottinghamshire County Council's consultation invites you to give your views about the proposed admission arrangements for community and voluntary controlled schools in Nottinghamshire for 2025-2026.

## **Background information**

### **Admission authorities**

There are different types of schools in Nottinghamshire. The County Council is the admission authority for all community and voluntary controlled schools. This means that we are responsible for the admission arrangements for these schools.

Other types of schools - academies, foundation, free, studio, trust and voluntary aided schools these are known as own admission authorities. These schools are responsible for their own admission arrangements and have to run their own consultation if changes are proposed. You would need to visit individual school websites for details.

### **Admission arrangements including oversubscription criteria**

All schools must have admission arrangements that clearly set out how children will be admitted, including information about what happens if there are more applications than places available (oversubscription criteria).

All admission authorities must include the oversubscription criteria in their arrangements. The criteria must be reasonable, clear, objective, procedurally fair, and comply with all relevant legislation, including equalities legislation.

It is for admission authorities to decide which criteria are most suitable for the school according to the local circumstances. There are no proposed changes to the oversubscription criteria for community and voluntary controlled schools.

**Nottinghamshire community and voluntary controlled schools** have defined catchment areas and children living in these areas have higher priority for places than children outside of catchment. The address point (using eastings and northings as defined by Ordnance Survey) will be the point used to determine if the property falls within a specific catchment area. Details of catchment areas are available at [www.nottinghamshire.gov.uk/education/school-admissions/school-catchment-areas](http://www.nottinghamshire.gov.uk/education/school-admissions/school-catchment-areas)

This does not prevent parents who live outside the catchment area of a school, or even outside Nottinghamshire, from expressing a preference for that school.

Children living in the catchment area with a brother or sister (sibling) attending the school are given priority over other children living inside the catchment area. Children living outside the catchment area with a brother or sister attending the school are given priority over all other children living outside the catchment area.

## **What is included in the consultation?**

Nottinghamshire County Council is consulting on the following for 2025-2026:

- Relevant areas
- Change to catchment area within the Gedling district (Chase Farm development)
- Proposed reduction of the Published Admission Number (PAN) at:
  - Sir Edmund Hillary Primary and Nursery School (from 60 to 45)
  - Walesby CofE Primary School (from 20 to 15)

### **Proposal 1 – relevant areas**

A relevant area is the area determined by the local authority and reviewed every two years outlining the area which the admission authority for that school must consult all other prescribed schools on any changes to its admission arrangements.

Nottinghamshire County Council last consulted on its relevant areas for the 2023-2024 admission year. These areas have been reviewed and no changes are proposed to the established 7 relevant areas which are coterminous with the administrative district in which the school or academy is located. For schools that have a catchment area or linked school that extends into other district areas the relevant area would also include that area, and/or the neighbouring local authority. For schools giving priority for children living in a parish the relevant area would also include the parish area that the school serves if this crosses into more than one administrative district area and/or other local authority.

### **Proposal 2 – change to catchment area within the Gedling district (Chase Farm development)**

In 2015-2016 Nottinghamshire County Council identified an area within the county that did not have a catchment area allocated (now known as Chase Farm development). At the time, the area of land, south of Spring Lane and extending to Arnold Lane and Lambley Lane was without an allocated catchment area. It was determined in 2015-2016 that the catchment area for Lambley Primary School was extended to include the area served by the Chase Farm development.

The County Council produced an Education Statement in April 2016 following consultation on the proposals for Land at Chase Farm, which confirmed that the development of 1050 dwellings would yield sufficient pupils to sustain a single form entry primary school and that there was no available capacity forecasted in local schools that could accommodate the growth in pupil population. On this basis, the County Council advised that a new primary school should be provided within the planning area.

Since this time, the demand for primary school places across Nottinghamshire has declined and the number of pupils on-roll at primary schools has gradually reduced largely due to falling birth rates which has been reflected nationwide. In addition, the area of the Chase Farm development, which falls within the Carlton planning area, is geographically closer in proximity to other schools in the area than Lambley Primary School which falls within the Arnold planning area.

The County Council has supported the delivery of a new single form entry primary school at Land at Teal Close (Rivendell Flying High Academy), which has increased the supply of places within the Carlton planning area, thereby releasing additional capacity to support the demand from Chase Farm.

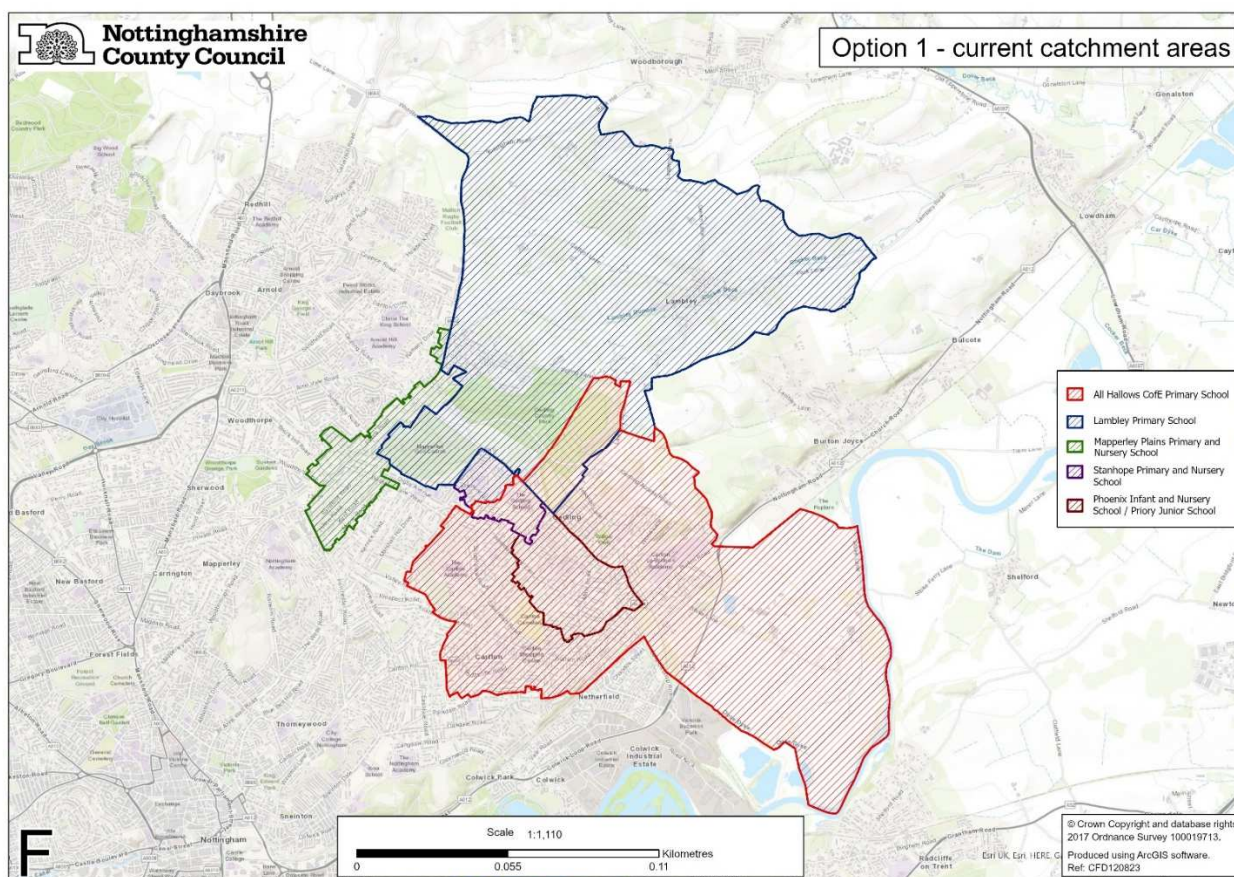
The latest pupil projection data which was submitted to, and approved, by the Department for Education (DfE) in October 2022 indicates that there will be a surplus of places at schools within the Carlton Planning Area over the next five years. Table 1 shows that there is forecast to be approx. 300 primary school places available across the planning area during each academic year. The projected demand is inclusive of the demand for school places anticipated from the housing at Chase Farm during the projection period (which equates to 704 of the 1050 dwellings permitted).

| School Name           | Planning Area | PAN |     |        | Proj Yea | School years |     |     |     |     |     | Whole school projection |      |                         |
|-----------------------|---------------|-----|-----|--------|----------|--------------|-----|-----|-----|-----|-----|-------------------------|------|-------------------------|
|                       |               | FA  | IJ  | Net ca |          | R            | 1   | 2   | 3   | 4   | 5   | 6                       | TOT  | surplus / deficit place |
| Planning area summary | Carlton       | 570 | 165 | 4000   | 2022-23  | 501          | 512 | 535 | 550 | 502 | 523 | 533                     | 3656 | +344                    |
| Planning area summary | Carlton       | 570 | 165 | 4000   | 2023-24  | 523          | 503 | 520 | 539 | 555 | 515 | 532                     | 3687 | +313                    |
| Planning area summary | Carlton       | 570 | 165 | 4000   | 2024-25  | 499          | 524 | 507 | 522 | 538 | 567 | 521                     | 3678 | +322                    |
| Planning area summary | Carlton       | 570 | 165 | 4000   | 2025-26  | 505          | 499 | 528 | 526 | 521 | 549 | 574                     | 3702 | +298                    |
| Planning area summary | Carlton       | 570 | 165 | 4000   | 2026-27  | 513          | 507 | 505 | 545 | 528 | 534 | 556                     | 3688 | +312                    |

The County Council considers that it is no longer appropriate for the Chase Farm development to only be in the catchment areas for Lambley Primary School and All Hallows CofE Primary School, due to there being insufficient capacity at the two schools to educate all pupils who are living, and are projected to be living, on the development.

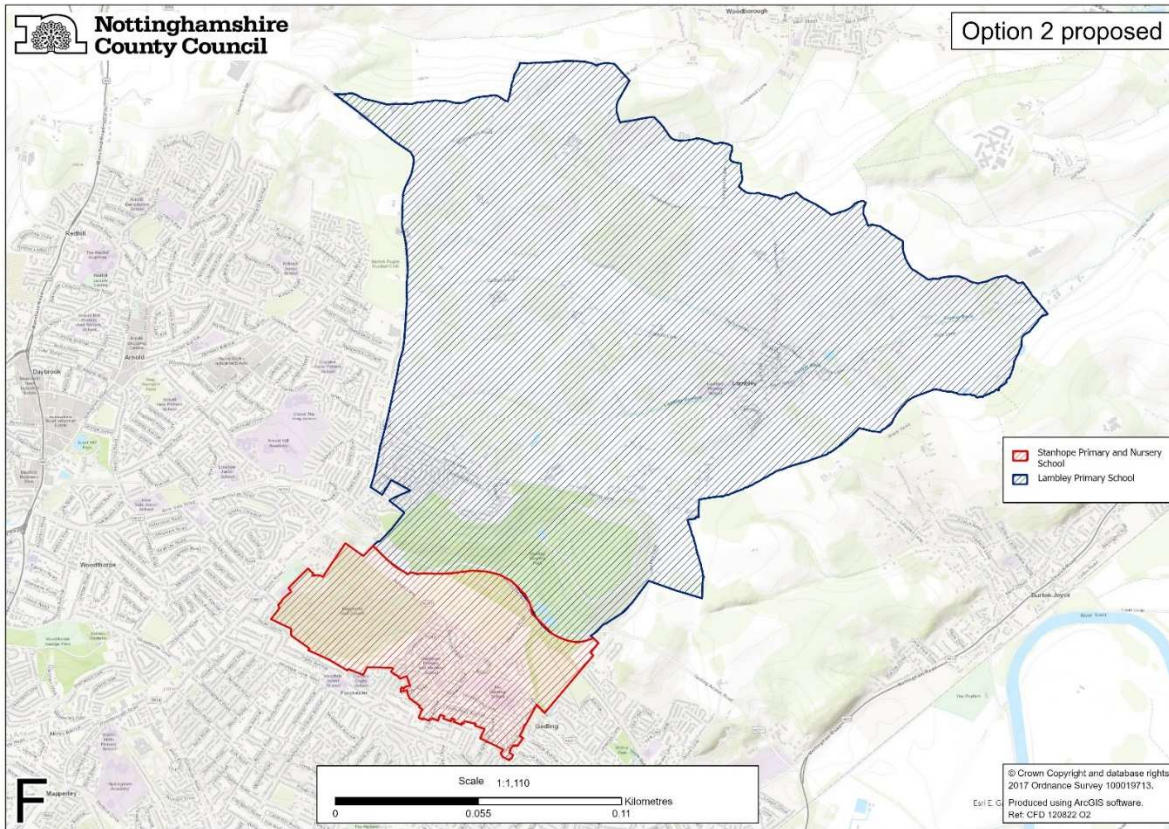
Taking into account the data above and requests from local schools to extend their catchment to include part of the Chase Farm development, Nottinghamshire County Council is consulting on 3 proposals. These proposals are detailed below and affect the catchment areas of Lambley Primary School, Stanhope Primary and Nursery School, Phoenix Infant and Nursery School and Priory Junior School. There are no proposed changes to other community and voluntary controlled schools within this locality and the existing catchment areas for other schools remain unchanged.

### Option 1 – retain existing catchment areas (no change)

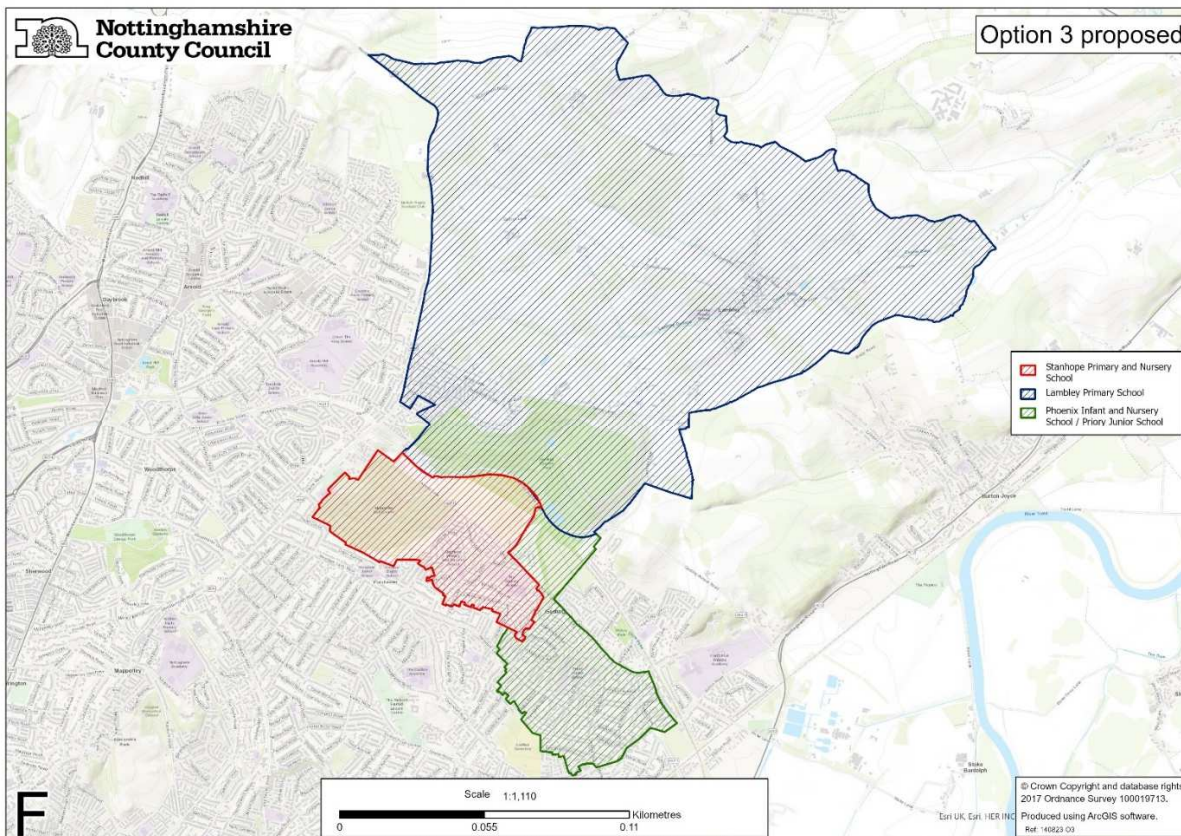




**Option 2 – remove the Chase Farm development from Lambley Primary School using A6211 as the boundary and extend the catchment area of Stanhope Primary and Nursery School to include all of the development up to the A6211.**



**Option 3 – remove the Chase Farm development from Lambley Primary School using A6211 as the boundary and extend the catchment area of Stanhope Primary and Nursery School, Phoenix Infant and Nursery School and Priory Junior School using Waldrom Road as the divide and up to the A6211.**



### **Proposal 3 – reduction to the published admission number (PAN)**

The PAN is the number of school places that the admission authority must offer in the age group that children are normally admitted (eg reception). Across the country there is a reduction in pupil population at first admission to school (reception). Place planning reviews indicate that the proposed reduction to PAN for the following schools will not impact on the delivery of sufficient school places in the area by the 2025-2026 academic year.

| DISTRICT  | SCHOOL  | CURRENT PAN<br>2024-2025 | PROPOSED<br>PAN 2025-2026 |
|-----------|---|--------------------------|---------------------------|
| Bassetlaw | Sir Edmund Hillary Primary and Nursery School | 60                       | 45                        |
| Newark    | Walesby CofE Primary School                   | 20                       | 15                        |

**No other changes are being proposed.**

The full proposed admission arrangements document for 2025-2026 is available at [www.nottinghamshire.gov.uk/admissionsconsultation](http://www.nottinghamshire.gov.uk/admissionsconsultation)

## Who do we consult with?

We will be seeking the views of the following groups:

- parents of children between the ages of two and eighteen
- other people in the relevant area who may have an interest in the proposed admission arrangements
- all other admission authorities within the relevant area
- all community and voluntary controlled schools in Nottinghamshire
- chairs of governing bodies of Nottinghamshire schools
- diocesan representatives (relevant religious authorities)
- admission authorities in neighbouring local authority areas
- all registered early years providers within Nottinghamshire

## You can give your views on the consultation between 2 October 2023 and 26 November 2023

Anyone can comment on the arrangements. If you wish to respond, you can do this up to 26 November 2023 by:

- completing the online response form on the public website [www.nottinghamshire.gov.uk/admissionsconsultation](http://www.nottinghamshire.gov.uk/admissionsconsultation)
- emailing [admissionsconsultations@nottscc.gov.uk](mailto:admissionsconsultations@nottscc.gov.uk)

**The School Admissions Code 2021 (1.48) states that the full proposed admission arrangements must be available on the website for the duration of the consultation period.**

## What happens after the consultation closes?

**All responses received by 26 November 2023 will be considered. Elected members (County Councillors) make a decision on behalf of Nottinghamshire taking into account a range of information, including the consultation responses.** All admission authorities have to agree the admission arrangements that are most suitable according to the local circumstances.

### **Determining admission arrangements 2025-2026**

Admission arrangements for community and voluntary controlled schools must be agreed (determined) by Nottinghamshire County Council by **28 February 2024** even if there have been no changes from previous years.

### **Publication of determined arrangements 2025-2026**

Once Nottinghamshire County Council has determined their admission arrangements, they will be available on the public website for the whole offer year (the academic year in which offers for places are made). Local authorities must publish on their website **by 15 March 2024**.